

BiFiMa

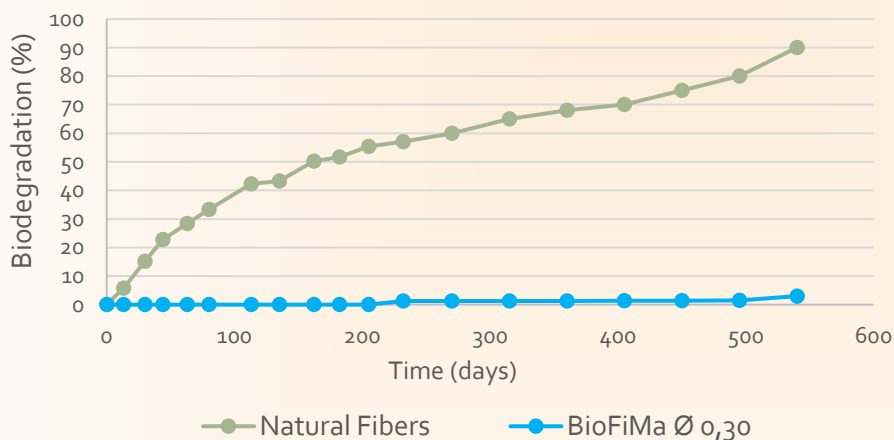
BIOPLASTIC MONOFILAMENT

For monofilament extrusion spinning

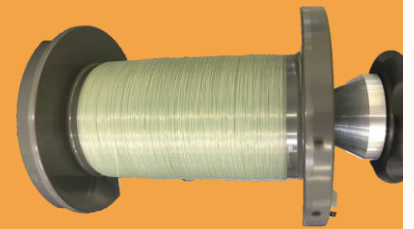
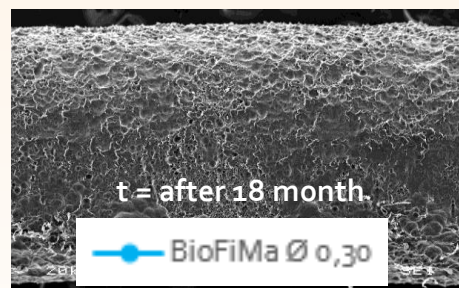
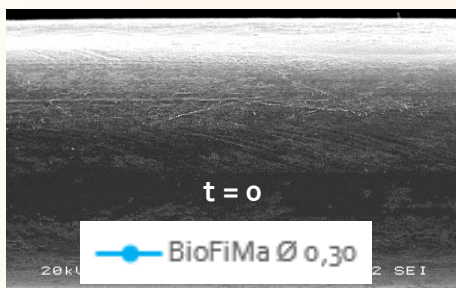
Mechanicals Properties

	Methods	Unit Measure	Ø 0,30 <i>+ UV ageing 5 months</i>	Ø 0,35	Ø 0,45
Titration	EN ISO 2060	tex	97 <i>97</i>	160	220
Breaking load	EN ISO 2062	cN	1920 <i>1750</i>	3240	4550
Elongation at break	EN ISO 2062	%	68 <i>72</i>	115	130
Tenacity	EN ISO 2062	cN/tex	20 <i>18</i>	20,57	20,24

Biodegradation in water



MEB Characterisation



**BIOBASED
BIODEGRADABLE
MONOFILAMENT**

**PROPERTIES
SIMILAR TO
POLYAMIDE
(NYLON)**

**DIAMETERS
(0.22MM TO 3MM)**

**NO TOXIC
ADDITIVE**



contact@seabird.fr
www.seabird.fr

Bioplastics engineering
office